

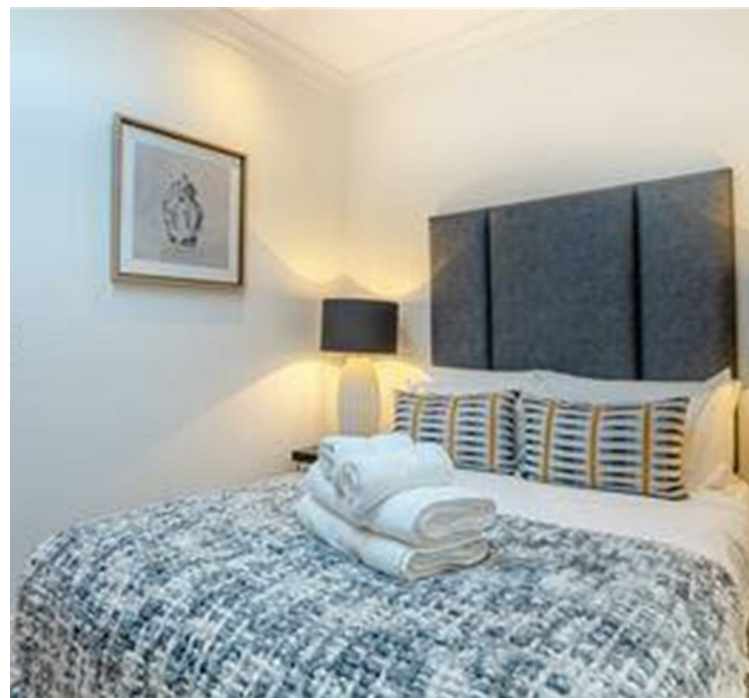
STURGES
LONDON

Rainville Road, London

£4,225 Per calendar month



- New build gated development | Riverside location
- Warehouse conversion | Interior designed
- On-site building manager | Secure parking available
- CCTV | Key phone entry system
- 24-hour emergency & maintenance service | Available furnished or unfurnished
- Flexible rental terms



STURGES
LONDON



Rainville Road, London

A stunning brand new interior designed, two bedroom, two bathroom second-floor apartment facing the courtyard set within this newly converted, warehouse style, gated development on the River Thames.

The apartment boasts a bright open plan kitchen and living area, two bedrooms with en suite bathrooms and separate WC. The fully fitted Metris Kitchen is complete with Miele appliances including an integrated dishwasher, washer/dryer, full height fridge freezer, oven, hob, and integrated extractor fan as well as a wine cooler. The bathrooms comprise of full bathroom suites with underfloor heating whilst the bedrooms boast bespoke mirrored wardrobes and automatic lighting. Further benefits of the apartment include a Crestron audio-visual system, a digital video door entry system, and pre-wiring for Sky + TV.

With its riverside location, Palace Wharf is also conveniently close to a number of transport links including Hammersmith Overground and Underground Station, Barons Court, Putney Bridge, and Fulham Broadway Underground Stations, along with several regular and varied bus services which further improve accessibility

Local Authority:

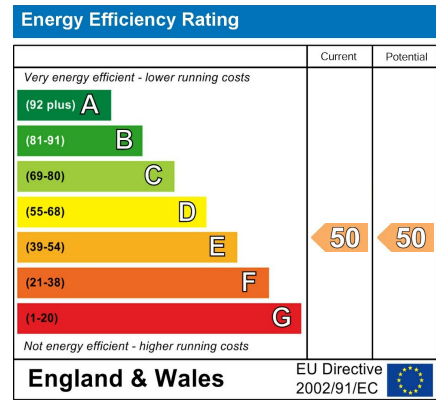
Council Tax Band: F

Lease: Add text here

Service Charges: Add text here

Ground Rent: Add text here

STURGES
LONDON



For more information, please contact:

(Tel) 020 3393 2002

(Email) hello@sturgeslondon.co.uk

668 Fulham Road, Parsons Green, London, SW6 5RX

sturgeslondon.co.uk

Agents Note: Whilst every care has been taken to prepare these particulars, they are for guidance purposes only. All measurements are approximate and for general guidance purposes only and whilst every care has been taken to ensure accuracy, they should not be relied upon and potential buyers/tenants are advised to recheck the measurements.